

10N14 ϕ 12.5 com 1.50

FORMA SAPATAS

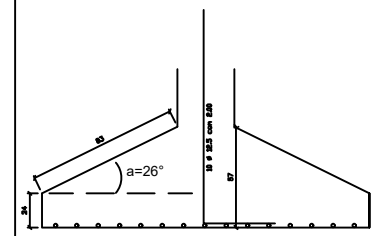
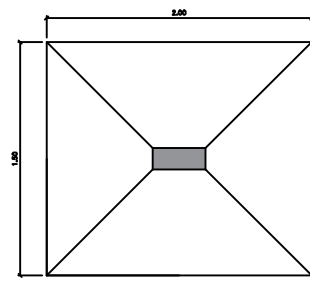
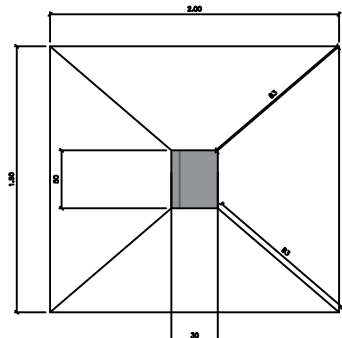
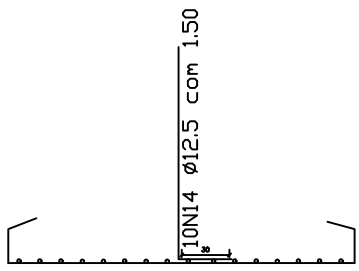
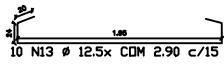
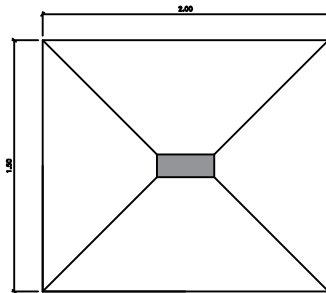
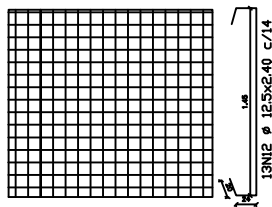
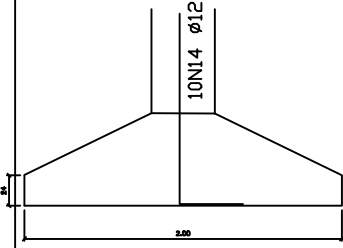
1 - 2 - 5 - 10 - 16 - 24 - 31 - 34
38 - 39 - 53 - 54 - 63 - 64 - 65
66 - 67 - 84

FCK: 30 MPa

RESUMO DO AÇO

POS	DIM	C TOTAL	RESUMO
N12	12.5	824	886.40
N13	12.5	381	394.20
N14	12.5	200	208.00
		TOTAL	1488.60

FORMA BLOCOS	116.0 M2
CONCRETO BLOCOS	46.0 M3



12 ϕ 16.0 com 2.00

FORMA SAPATAS

7 - 9 - 44 - 45 - 46 - 47 - 48 - 49 - 50
51 - 53 - 55 - 56 - 57 - 58 - 59
71 - 72 - 79 - 80

FCK: 30 MPa

RESUMO DO AÇO

POS	DIM	C TOTAL	RESUMO
N10	16.0	1020	1632.00
N11	16.0	1072	1713.60
N12	16.0	380	608.00
		TOTAL	3953.60

FORMA BLOCOS	144.0 M2
CONCRETO BLOCOS	56.25 M3

